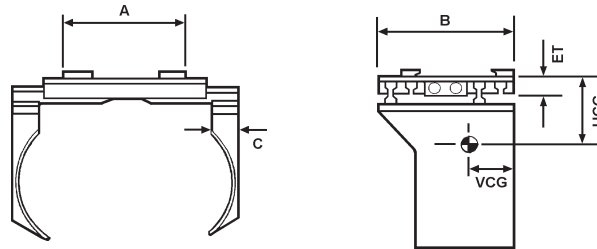


T50B Series Basic Drum Clamp



Hydraulic Requirements: Single function auxiliary kit

Basic Single Drum Arms

Model No.	Capacity @ 24" LC	Range Inside Arms	Mtg	Weight	Weight			Max No. of Drums	A	B	C
					ET	HCG	VCG				
T50-25-22-64BS	2500	22 - 64	II	605	4.8	4.8	10.2	2	36	21.0	2.0
T50-35-22-64BS	3500	22 - 64	II	672	4.8	4.6	11.4	2	36	22.6	2.0
T50-50-22-74BS	5000	22 - 74	II/III	882	5.5	4.3	12.5	2	43	25.1	2.0

Basic Double Drum Arms

T50-25-17-59BD	2500	22 - 64	II	748	4.8	9.2	10.2	4	36	21.0	3.5
T50-35-17-59BD	3500	22 - 64	II	815	4.8	8.7	11.1	4	36	22.6	3.5
T50-50-17-69BD	5000	22 - 74	II/III	1025	5.5	7.7	12.0	4	43	25.1	3.5

Drum arms open and close equally

Maximum Pressure

2250 psi (150 bar)

Recommended Flow

6 gpm (27 litres)

Optional Auxiliary Hydraulics

- 3 way pressure reducing valve
- Variable pressure reducing valve
- Pressure gauge
- Quick disconnect couplings

Things we need to know...

- ✓ Weight of Drum
- ✓ Max. Diameter of Drum
- ✓ Min. Diameter of Drum
- ✓ No. of Drums
- ✓ Forklift Capacity